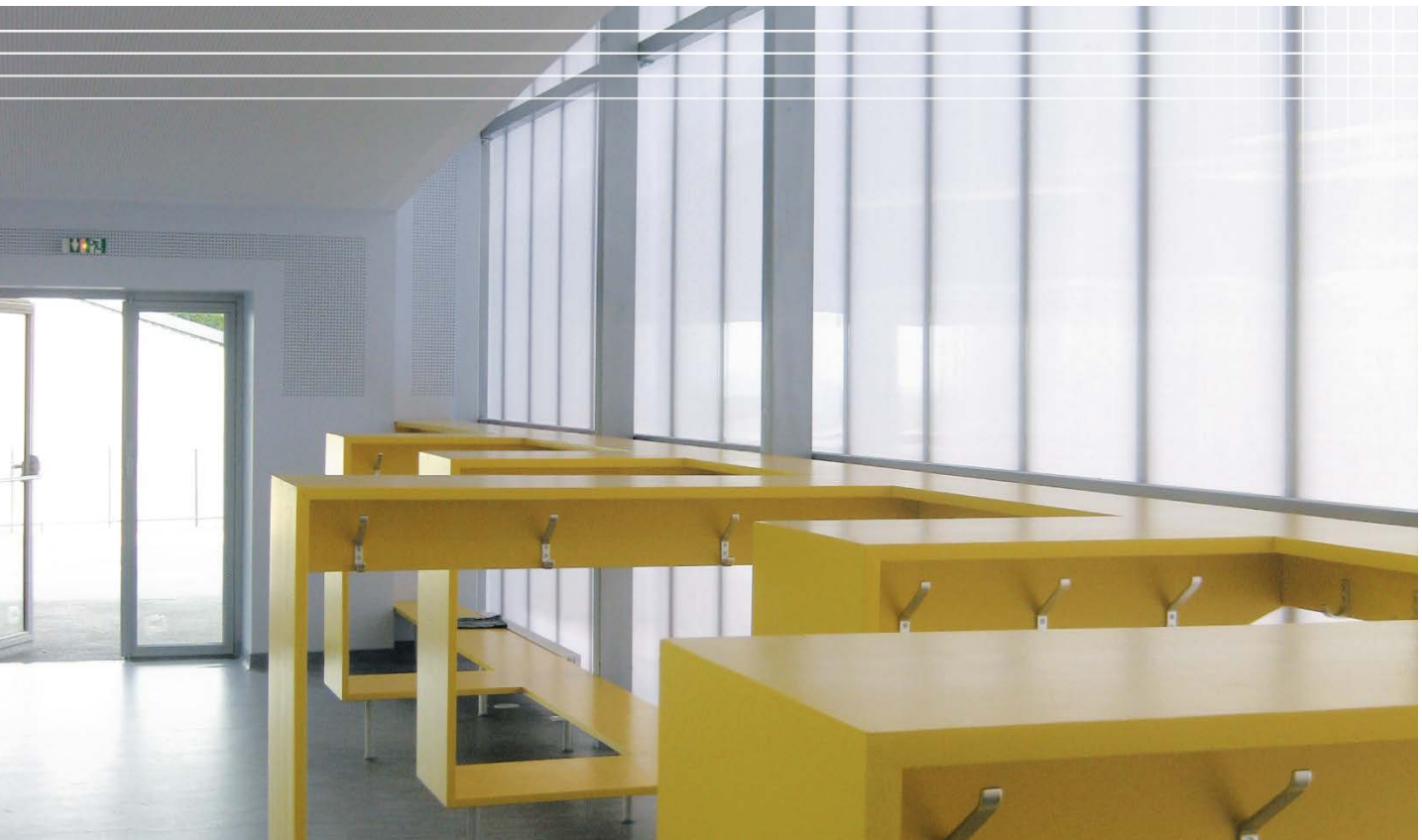


DANPATHERM K7

■ FACADE



LIGHT & INSULATION

DANPATHERM

K7

AN INNOVATIVE FACTORY ASSEMBLED
“READY-TO-INSTALL” SYSTEM FOR
TRANSLUCENT FACADES OFFERING
EXCELLENT THERMAL INSULATION



■ **Ice skating rink Saint-Gervais-les-Bains** (France),
Danpatherm K7 clear,
Architect: Laurent Bânsac,
Installer: SMAC



■ **Creche, Trignac** (France), Danpatherm K7 red,
Architect: CD Architecture, Installer: FACIL crèches, Ateliers David Entreprises



■ **Co-operative Le rabio**, Martinvast (France), Danpatherm K7 green,
Architect: Cabinet Besuelle et Salley, Installer: C2L



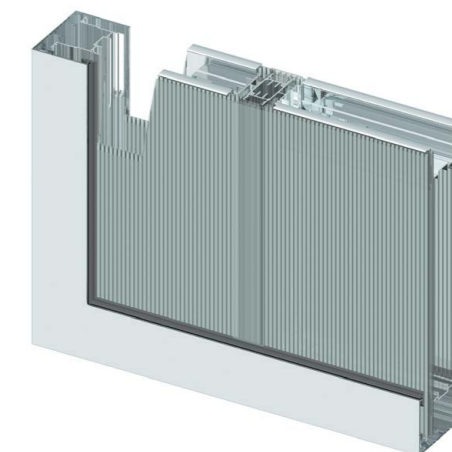
■ **University Canteen Grand Bouloie**,
Besançon (France), Danpatherm K7 orange,
Architect: Alain Cartignies & Marie-José Canonica,
Installer: Menuiserie Des Saints Martin

BENEFITS OF DANPATHERM K7

- EXCELLENT LEVELS OF LIGHT TRANSMISSION
- EXCEPTIONAL THERMAL INSULATION
- FACTORY PRE-ASSEMBLED CASSETTE
- QUICK, EASY AND COST EFFECTIVE INSTALLATION
- EXCELLENT SPANNING CAPABILITIES
- CSTB CERTIFIED TO EN STANDARDS



■ **Sports hall**
Armand Desmet,
Clichy-sous-Bois (France),
Danpatherm K7 clear,
Architect: Carril,
Installer: Cibetanche



Danpatherm K7 is a unique, factory pre-assembled building concept designed to comply with RT2012 and on-site installation constraints. The system is easy to install and provides excellent light transmission and heat insulation.

■ Soft, diffused light

The Danpalon® double wall is sheathed with Sofflite, a special 100% permanent finish which ensures uniform light and prevents the glare effect.

■ Excellent thermal insulation

Depending on the nature of the cavity (air space or translucent insulating material), the unique double glazing concept allows values as long as 0.83 W/m².K*.

*CSTB/independent certified value

■ Ready-to-install building system

Danpatherm K7 is factory pre-assembled and cut to size, which makes it extremely quick, easy and cost effective to install.

■ EVERLITE CONCEPT support

A technical support team is at your service to assist you in creating the details and layout plans.

■ Wide range of hues for endless creativity

Play with material and light and make up your own Danpatherm K7 selection!

■ EVERLITE CONCEPT insurance

Danpatherm K7 performance and installation conditions are independently certified to EN standards by the CSTB Technical Assessment Department.

■ **Covering: Canteen, Aigurande** (France),
Danpatherm K7 ice Sofflite, Architect: Bruno Robinne,
Installer: SMAC Rousseau

TECHNICAL FEATURES

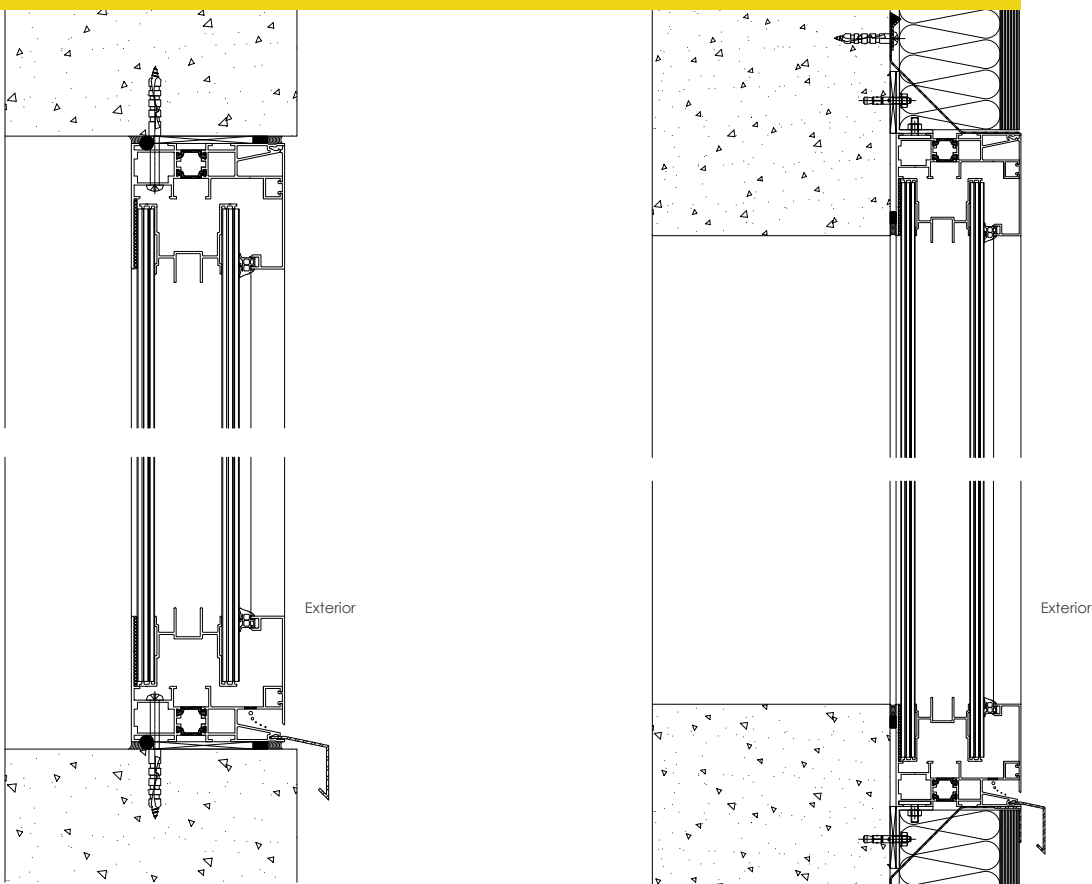
Approximate indicative values, measured by internal tests according to the ASRAE 74 1988 standard

DANPATHERM K7

Number of walls	4 + air space + 4	4 + insulation + 4
Structure	Honeycomb (HC) panels, forming double glazing	
Width	624 mm	
Length <small>Please contact us for lengths exceeding 6 m</small>	Standard up to 6 m	
U Value (W/m ² .K)	1.10	0.83
Light transmission (LT) <small>LT %: Visible light transmission (400-700 nm)</small>	Up to 45 %	Up to 30 %
Reaction to fire*	B - s2, d0	
Span between supports	Up to 3 m	
Ten-year warranty + hail warranty	Yes	
Impact and shock resistance	PV CSTB n°CLC 08-26013546/A	
Technical agreement	CSTB Technical Assessment	
Sofflite	Light effect limiting Sofflite (anti-glare) treatment according to CSTB report EN -ECL 05.10.C and Danpatherm K7 series	

*According to SBI test protocol (Single Burning Item) established according to French Standards 13501-1: 2002 and the modified order of 21st November 2002

VERTICAL SECTIONS



EVERLITE
Architecture Lumière

EVERLITE CONCEPT S.A.S 2-6, rue Condorcet, 91350 Grigny, France
T : +33 (0)1 69 02 85 85, F : +33 (0)1 69 02 85 87, everlite.concept@everlite.fr

Find all our applications at

WWW.EVERLITECONCEPT.COM